

Community-Owned Climate Resiliency

Utility Scale Clean Energy Ownership:
Indigenous-Owned Power Authorities to lead the Just Transition



Joe McNeil

General Manager, SAGE
Development Authority
Panelist



Warren Hawk

Board Member, SAGE and Council
Member, Standing Rock Sioux Tribe
Panelist



STANDING ROCK
SIOUX TRIBE





Warren Hawk

Standing Rock Sioux Tribe

Warren Hawk currently serves on the Standing Rock Sioux Tribal Council. He holds a degree in business administration and political science. He moved back to Standing Rock in 2017 when he accepted a Grant Management position in the Tribe's, Planning and Grants Management Department. Prior to moving home Warren spent 35 years in Oklahoma where he, and his family, raised their two children. Most of his experience would be classified as community activism and volunteering for organizations like Native Americans for a Cleaner Environment and helping to create various community based and grassroots organizations.



**STANDING ROCK
SIOUX TRIBE**



Joseph McNeil

SAGE Development Authority

Joseph McNeil is an enrolled member of the Standing Rock Sioux Tribe, General Manager of the SAGE Development Authority, President of Standing Rock Development Corp/Rock Industries Corp. and Chairman for the Oyate CDFI/CU in Ft. Yates, N.D. He is married to Sheridan McNeil and share four children. He was recently awarded the Bush Foundation Fellowship for leadership (2019), M.I.T. Oceti Sakowin Inaugural Fellow (2018), is active for Indigenous rights, and community economic development. He earned his B.S. in Business Administration from Sitting Bull College. He is a former member of the Standing Rock Tribal Council and Sitting Bull College Board of Directors.





SAGE Development Authority

Power for the People





Executive Summary

The SAGE Development Authority (SAGE), a 100% Native-led organization, is dedicated to community development, institution-building, and self-determination for the Standing Rock Sioux Tribe. SAGE Development Authority exists to ensure energy independence, protect the environment, and promote economic growth in the region, for the Tribe.

SAGE acts as a Public Power Authority (PPA) that will control and operate all the energy production assets within the reservation. SAGE institutionalizes Standing Rock's involvement in renewable energy projects, facilitates agreements with third-party entities, and holds the Standing Rock Sioux Tribe's equity interest.





SAGE's work



Community led development to spur equitable and inclusive economic growth for the Standing Rock Sioux Tribe



Pre Development of key projects to serve community and achieve SAGE's vision




Build capacity of Tribal members to create more equitable economic growth in the region



Redistribute profits into the community equitably

SAGE: Moving from Exclusion to Ownership

The Standing Rock people have long been excluded from participation in economic opportunity and activity, making it one of the **top 10 poorest counties in the U.S.**



The reservation population experiences a **70%** unemployment rate and a **40%** poverty rate

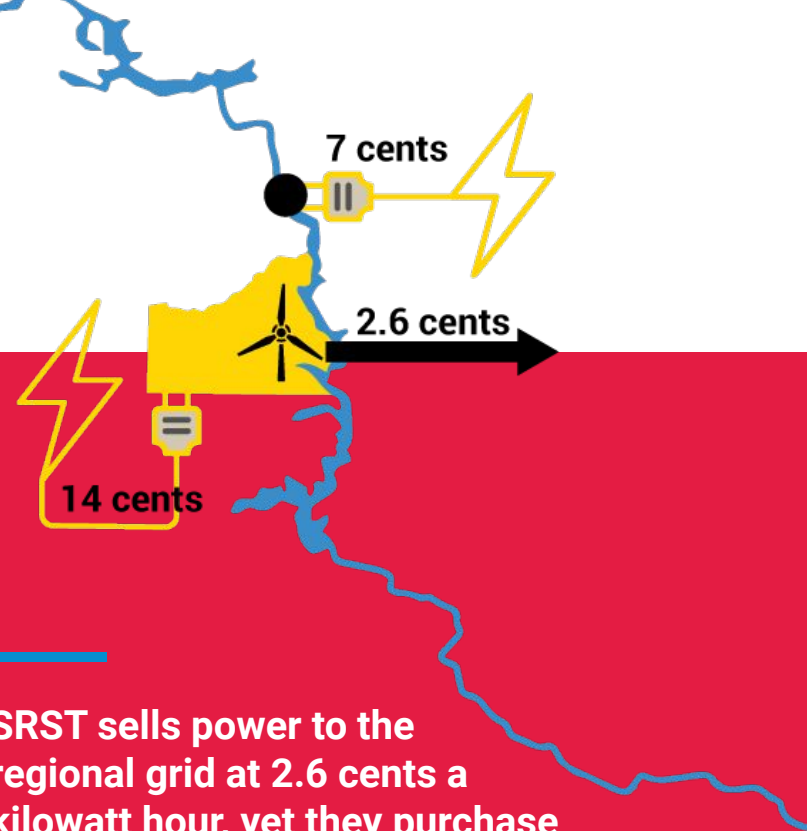
SAGE: Moving from Exclusion to Ownership

Energy inequity is a core driver of this economic disparity.

The cost of electricity for those on Standing Rock is more than double the cost in nearby Bismarck, ND.

SRST sells power to the regional grid at 2.6 cents a kilowatt hour, yet they purchase the power BACK from the same regional grid at over 14 cents a kilowatt hour.*

** as of 2018*



SAGE
Current
Projects in
Development

Wind



Regenerative
Agriculture



Housing /
Microgrids



EVs



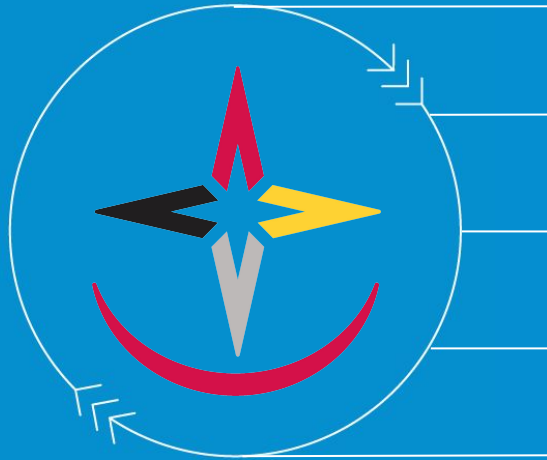
Solar



Buffalo

SAGE Priorities for Reinvestment

Revenue from these projects is reinvested into local infrastructure and education:



A federal credit union / community development finance institute to expand access to capital

Museum and Interpretive Center that both educates and promotes tourism – bringing further revenue to Standing Rock.

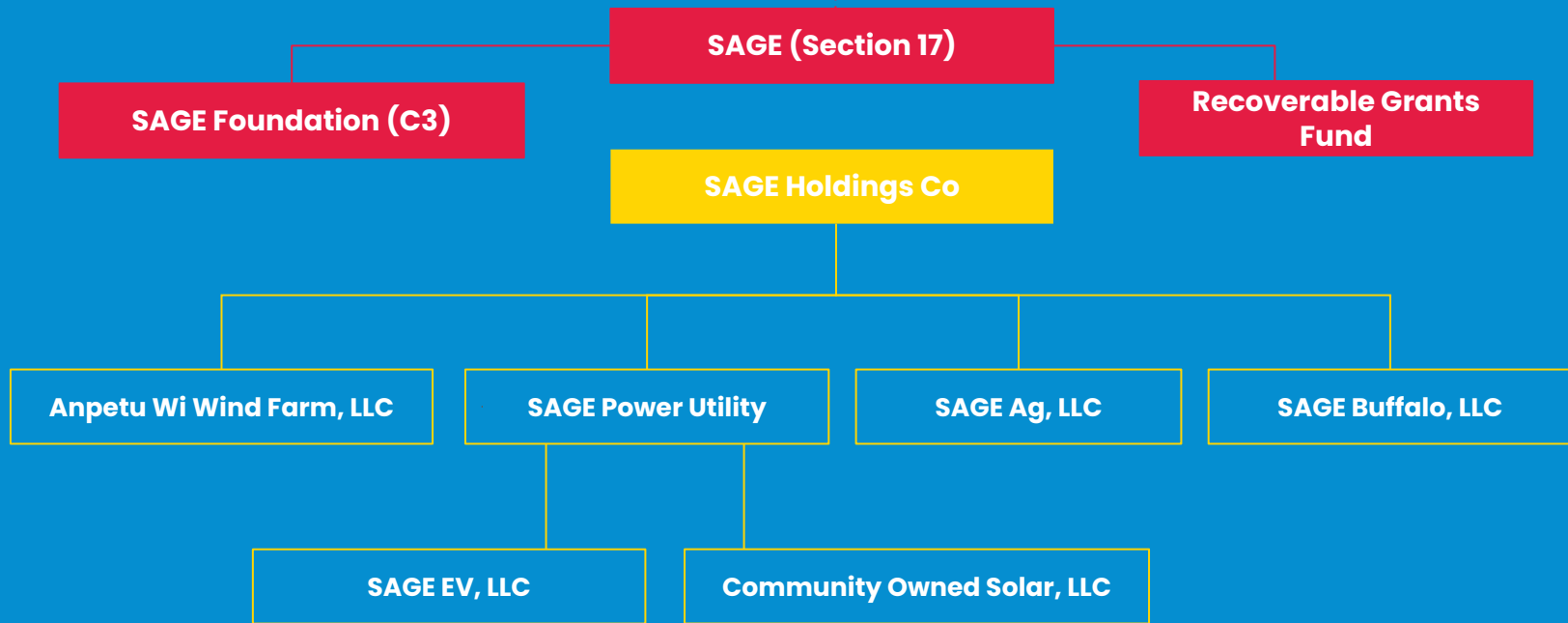
Mni Wiconi Health Clinic

Reclaim decommissioned land and recycled energy assets

Expand STEM Education



The Growing SAGE Structure





Pilamayaye
Thank you

www.sagesrst.com e: jmcneil@sagesrst.com



Anpetu Wi Wind Farm

Presented by **SAGE Development Authority**

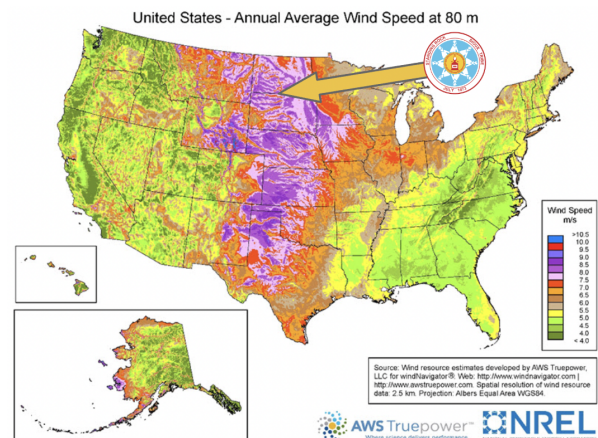
www.anpetuwi.com



The SAGE Development Authority (SAGE), a **100% Native-Led organization**, is dedicated to community development, institution-building, and self-determination for the Standing Rock Sioux Tribe. SAGE exists to ensure energy independence, protect the environment, and promote economic growth in the region, for the Tribe. Located in a **high wind potential region** in North Dakota, SAGE's inaugural project, the Anpetu Wi Wind Project, will deliver 235MW of clean energy, create jobs for Tribal members, and spark economic growth in the region.

Moving from Energy Exclusion to Energy Ownership

Anpetu Wi is particularly critical given that the Standing Rock Sioux Nation is one of the 10 poorest counties in the United States¹ with an unemployment rate of 50%² and a poverty rate of 36%³. Energy inequity is a core driver of this economic disparity. Anpetu Wi offers a powerful and sustainable resource to move the Tribe **from energy exclusion to energy ownership**.



Catalytic Investment in Standing Rock's Clean Energy Future

SAGE's initial development work created the foundation for a successful Wind Farm and the success of future projects, and in order to maintain ownership of Anpetu Wi, SAGE chose to leave the development fee in as an equity investment. This will **de-risk the project** for investors and create an opportunity for SAGE to participate in the value creation from the project for decades to come. By sharing in the value creation from the beginning, SAGE is elevated to a lead investor for future projects. Anpetu Wi will be the first wind farm in the U.S. that is positioned to ensure a **Native American Tribe will gain and maintain meaningful ownership** over time.

¹ World Population Review, 2022 Poverty Rate by County

² Department of Interior and Indian Health Service, Testimony by Ira Taken Alive, 2019

³ Census Reporter, ACS 2020 5-year, Standing Rock Reservation

Seasoned and Experienced SAGE Board of Directors



Left: Fawn Wasin Zi (Board Chair), Phyllis Young (Vice Chair), Warren Hawk (Treasurer), Wilberta Red Tomahawk (Director), Chad Harrison (Director), and Joseph McNeil, Jr. (General Manager).

Expert Advisors and Consultants



Economic Strategy and
Investment Advisors



Legal



Surveying



Executive Advisor



Fiscal Sponsor



Lead Energy Developer
Advisor



Transmission Assessment,
Collection Design,
Interconnection App



Wind Resource Assessment;
Preliminary Turbine & Road
Layout



Environmental
Studies

Strong Support from Investors



The Cotyledon Fund



JOIN US!

Anpetu Wi is historic. This 100% Native-Led project will deliver 235MW of clean energy, create good jobs for Tribal members, and spark decades of economic growth in the region. Our initial Development Fundraising Phase, will multiply the project's returns & impact many times over for Investors and the Tribe.